



Spec Sheet: Stainless Steel Street Elbow (SS90°)

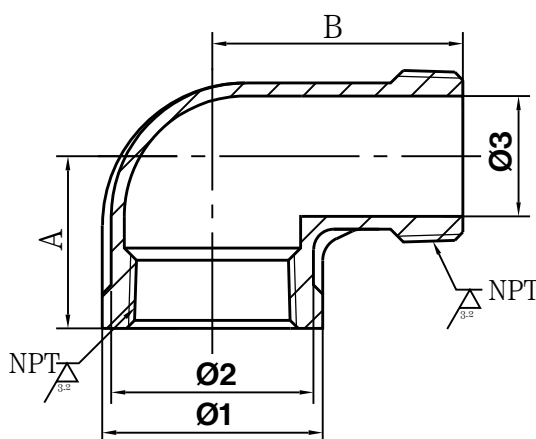
Features

- Low Maintenance
- Compact and space-saving
- Durable
- Available in a variety of sizes



Dimensions (mm)

ITEM	SIZE	Ø1	Ø2	Ø3	A	B
SS90-018	1/8"	15.5	13.5	5.2	17.0	25.0
SS90-014	1/4"	18.5	15.5	7.6	20.0	28.0
SS90-038	3/8"	22.0	19.0	10.0	23.0	38.0
SS90-050	1/2"	28.0	25.0	13.6	28.0	42.0
SS90-075	3/4"	34.0	31.0	18.8	32.0	46.0
SS90-100	1"	42.5	39.5	26.3	37.5	53.0
SS90-125	1-1/4"	51.0	48.0	34.4	43.5	62.0
SS90-150	1-1/2"	58.0	55.0	40.3	46.5	68.5
SS90-200	2"	71.0	68.0	51.1	60.5	84.0
SS90-250	2-1/2"	85.0	82.0	60.0	65.0	104.0
SS90-300	3"	102.0	99.0	75.3	76.0	112.0
SS90-400	4"	130.0	126.0	98.0	96.5	127.5



PRESSURE & TEMPERATURE RATING	
Temperature °F (°C)	Class 150, PSIG
-20 to 150 (-29 to 66)	300
200(93)	265
250 (121)	225
300(149)	185
350(177)	150

Linear dimensional tolerances for castings ISO 8062 (GB/T 6414)										
Limit deviation	Basic size segment									
	0~10	>10~16	>16~25	>25~40	>40~63	>63~100	>100~160	>160~250	>250~400	>400~630
CT8	±0.5	±0.55	±0.6	±0.65	±0.7	±0.8	±0.9	±1.0	±1.1	±1.3



WARNING: This product can expose you to chemicals including Lead, which are known to the State of California to cause cancer and birth defects or other reproductive harm. For more information go to: www.P65Warnings.ca.gov
Wash hands after handling.