



# Spec Sheet: Stainless Steel Hexagon Bushing (SHX)

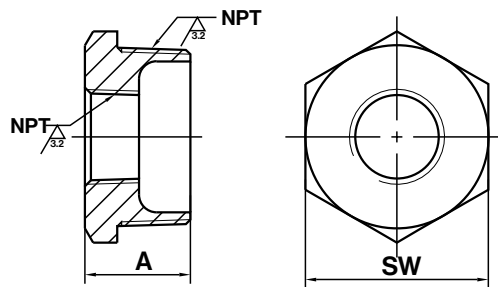
## Features

- Durable and dependable
- Versatile
- Available in a variety of sizes



## Dimensions (mm)

ITEM	SIZE	A	W	ITEM	SIZE	A	W
SHX-1418	1/4x1/8	20.0	17.0	SHX-2018	2x1/8	34.5	61.5
SHX-3818	3/8x1/8	21.5	21.0	SHX-2014	2x1/4		
SHX-3814	3/8x1/4			SHX-2038	2x3/8		
SHX-5018	1/2x1/8	24.0	24.5	SHX-2050	2x1/2		
SHX-5014	1/2x1/4			SHX-2075	2x3/4		
SHX-5038	1/2x3/8	24.5	30.0	SHX-2010	2x1		
SHX-7518	3/4x1/8			SHX-2012	2x1-1/4		
SHX-7514	3/4x1/4			SHX-2015	2x1-1/2		
SHX-7538	3/4x3/8			SHX-2550	2-1/2x1/2		
SHX-7550	3/4x1/2			SHX-2575	2-1/2x3/4		
SHX-1018	1x1/8			29.0	37.0	SHX-2510	2-1/2x1
SHX-1014	1x1/4	SHX-2512	2-1/2x1-1/4				
SHX-1038	1x3/8	SHX-2515	2-1/2x1-1/2				
SHX-1050	1x1/2	SHX-2520	2-1/2x2				
SHX-1075	1x3/4	SHX-3050	3x1/2				
SHX-1218	1-1/4x1/8	31.0	45.5			SHX-3075	3x3/4
SHX-1214	1-1/4x1/4			SHX-3010	3x1		
SHX-1238	1-1/4x3/8			SHX-3012	3x1-1/4		
SHX-1250	1-1/4x1/2			SHX-3015	3x1-1/2		
SHX-1275	1-1/4x3/4			SHX-3020	3x2		
SHX-1210	1-1/4x1			SHX-3025	3x2-1/2		
SHX-1514	1-1/2x1/4			33.0	51.0	SHX-4010	4x1
SHX-1538	1-1/2x3/8	SHX-4012	4x1-1/4				
SHX-1550	1-1/2x1/2	SHX-4015	4x1-1/2				
SHX-1575	1-1/2x3/4	SHX-4020	4x2				
SHX-1510	1-1/2x1	SHX-4025	4x2-1/2				
SHX-1512	1-1/2x1-1/4	SHX-4030	4x3				
						49.0	95.0
						50.0	120.0



PRESSURE & TEMPERATURE RATING	
Temperature °F (°C)	Class 150, PSIG
-20 to 150 (-29 to 66)	300
200(93)	265
250 (121)	225
300(149)	185
350(177)	150

Linear dimensional tolerances for castings ISO 8062 (GB/T 6414)										
Limit deviation	Basic size segment									
	0~10	>10~16	>16~25	>25~40	>40~63	>63~100	>100~160	>160~250	>250~400	>400~630
CT8	±0.5	±0.55	±0.6	±0.65	±0.7	±0.8	±0.9	±1.0	±1.1	±1.3