



Spec Sheet: Stainless Steel Socket (SCPL)

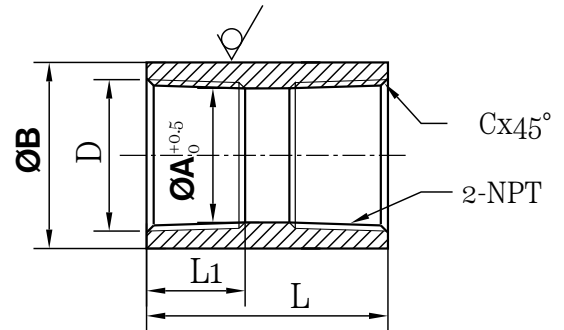
Features

- Easy installation
- Durable and dependable
- Available in a variety of sizes



Dimensions (mm)

| ITEM | D | $\text{ØA}_{0}^{+0.5}$ | ØB | L | L1 | C |
|----------|--------|------------------------|-------------|------|------|-----|
| SCPL-018 | 1/8" | 8.3 | 14.0 | 20.0 | 8.0 | 1.0 |
| SCPL-014 | 1/4" | 11.2 | 18.5 | 27.0 | 10.0 | 1.2 |
| SCPL-038 | 3/8" | 14.2 | 21.5 | 28.0 | 11.0 | 1.2 |
| SCPL-050 | 1/2" | 17.5 | 26.6 | 35.5 | 14.5 | 1.5 |
| SCPL-075 | 3/4" | 22.8 | 31.8 | 37.5 | 15.0 | 1.5 |
| SCPL-100 | 1" | 28.6 | 39.5 | 42.0 | 17.0 | 1.8 |
| SCPL-125 | 1-1/4" | 37.2 | 48.5 | 48.0 | 21.0 | 1.8 |
| SCPL-150 | 1-1/2" | 43.2 | 55.0 | 48.0 | 21.0 | 1.8 |
| SCPL-200 | 2" | 55.2 | 66.6 | 56.0 | 24.0 | 1.8 |
| SCPL-250 | 2-1/2" | 66.0 | 84.5 | 65.0 | 30.0 | 2.6 |
| SCPL-300 | 3" | 81.5 | 100.5 | 71.0 | 31.0 | 2.6 |
| SCPL-400 | 4" | 106.9 | 129.5 | 83.0 | 36.0 | 2.6 |



| PRESSURE & TEMPERATURE RATING | |
|-------------------------------|-----------------|
| Temperature °F (°C) | Class 150, PSIG |
| -20 to 150 (-29 to 66) | 300 |
| 200(93) | 265 |
| 250 (121) | 225 |
| 300(149) | 185 |
| 350(177) | 150 |

| Tolerance standards: ISO 2768 (GB/T 1804-200) | | | | | | | | |
|---|--------------------|------|-------|---------|----------|-----------|------------|------------|
| Limit deviation | Basic size segment | | | | | | | |
| | 0.5~3 | >3~6 | >6~30 | >30~120 | >120~400 | >400~1000 | >1000~2000 | >2000~4000 |
| m | ±0.1 | ±0.1 | ±0.2 | ±0.3 | ±0.5 | ±0.8 | ±1.2 | ±2 |



WARNING: This product can expose you to chemicals including Lead, which are known to the State of California to cause cancer and birth defects or other reproductive harm. For more information go to: www.P65Warnings.ca.gov
Wash hands after handling.