



# Spec Sheet: Stainless Steel 45° Elbow (S45)

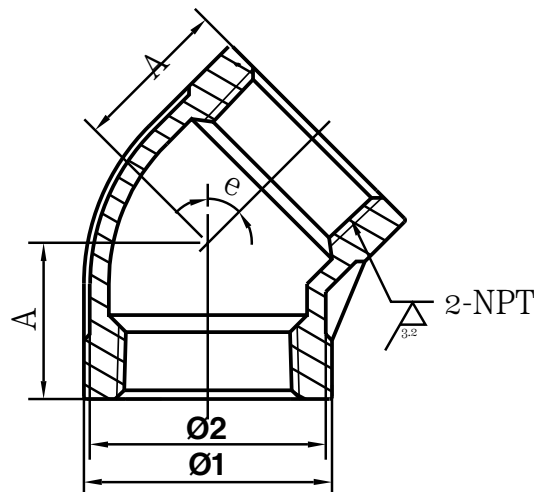
## Features

- Tough and reliable
- Easy install
- Available in a variety of sizes



## Dimensions (mm)

ITEM	SIZE	Ø1	Ø2	A
S45-018	1/8"	16.0	14.0	19.0
S45-014	1/4"	18.0	16.0	19.0
S45-038	3/8"	22.5	19.5	19.0
S45-050	1/2"	30.0	27.5	21.5
S45-075	3/4"	35.0	33.0	23.0
S45-100	1"	44.5	41.5	27.5
S45-125	1-1/4"	52.0	49.0	32.0
S45-150	1-1/2"	59.5	57.0	35.5
S45-200	2"	72.0	68.5	42.5
S45-250	2-1/2"	90.5	87.0	46.5
S45-300	3"	107.0	102.5	53.0
S45-400	4"	133.5	128.5	65.5



PRESSURE & TEMPERATURE RATING	
Temperature °F (°C)	Class 150,PSIG
-20 to 150 (-29 to 66)	300
200(93)	265
250 (121)	225
300(149)	185
350(177)	150

Linear dimensional tolerances for castings ISO 8062 (GB/T 6414)										
Limit deviation	Basic size segment									
	0~10	>10~16	>16~25	>25~40	>40~63	>63~100	>100~160	>160~250	>250~400	>400~630
CT8	±0.5	±0.55	±0.6	±0.65	±0.7	±0.8	±0.9	±1.0	±1.1	±1.3



**WARNING:** This product can expose you to chemicals including Lead, which are known to the State of California to cause cancer and birth defects or other reproductive harm. For more information go to: [www.P65Warnings.ca.gov](http://www.P65Warnings.ca.gov)  
Wash hands after handling.