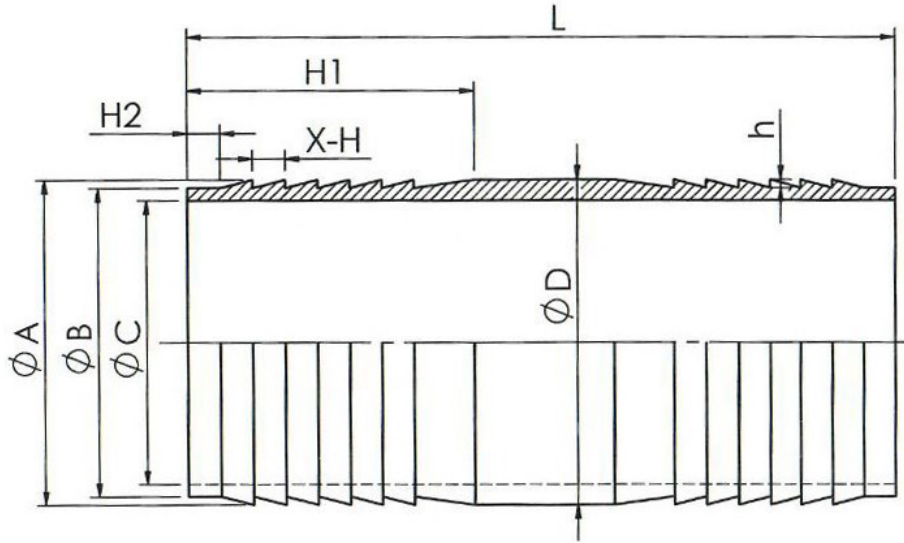




Spec Sheet: King Combo Plated Steel Fitting (KC)



Dimensions (mm)

Size	A	C	D	h	H1	L
1/2"	13.50	9.50	14	0.75	35	80
3/4"	20	16	20.50	0.75	39	100
1"	26	20.50	26	0.80	43	100
1-1/4"	32	26.50	32.50	0.75	42.50	100
1-1/2"	39	33	39	0.80	44	101
2"	51.50	45	52	1.30	44.50	111
2-1/2"	64	57	64.50	1.13	59	136
3"	77	70	77.60	1.50	60	146
4"	102.50	95	103.50	1.10	70	171

MACHINING TOLERANCES UNLESS SPECIFIED			
DIMENSION	IT 13	DIMENSION	IT 13
< 3	±0.14	>50 ~ 80	±0.46
3 ~ 6	±0.18	>80 ~ 120	±0.54
>6 ~ 10	±0.22	>120 ~180	±0.63
>10 ~ 18	±0.27	>180~250	±0.72
> 18 ~ 30	±0.33	>250~315	±0.81
> 30 ~ 50	±0.39	>315~400	±0.89
ANGULAR		ANGULAR	

Models

- KC-S50 1/2" King Combo Fitting
- KC-S75 3/4" King Combo Fitting
- KC-S100 1" King Combo Fitting
- KC-S125 1-1/4" King Combo Fitting
- KC-S150 1-1/2" King Combo Fitting
- KC-S200 2" King Combo Fitting
- KC-S250 2-1/2" King Combo Fitting
- KC-S300 3" King Combo Fitting
- KC-S400 4" King Combo Fitting



WARNING: This product can expose you to chemicals including Lead, which are known to the State of California to cause cancer and birth defects or other reproductive harm. For more information go to: www.P65Warnings.ca.gov
Wash hands after handling.