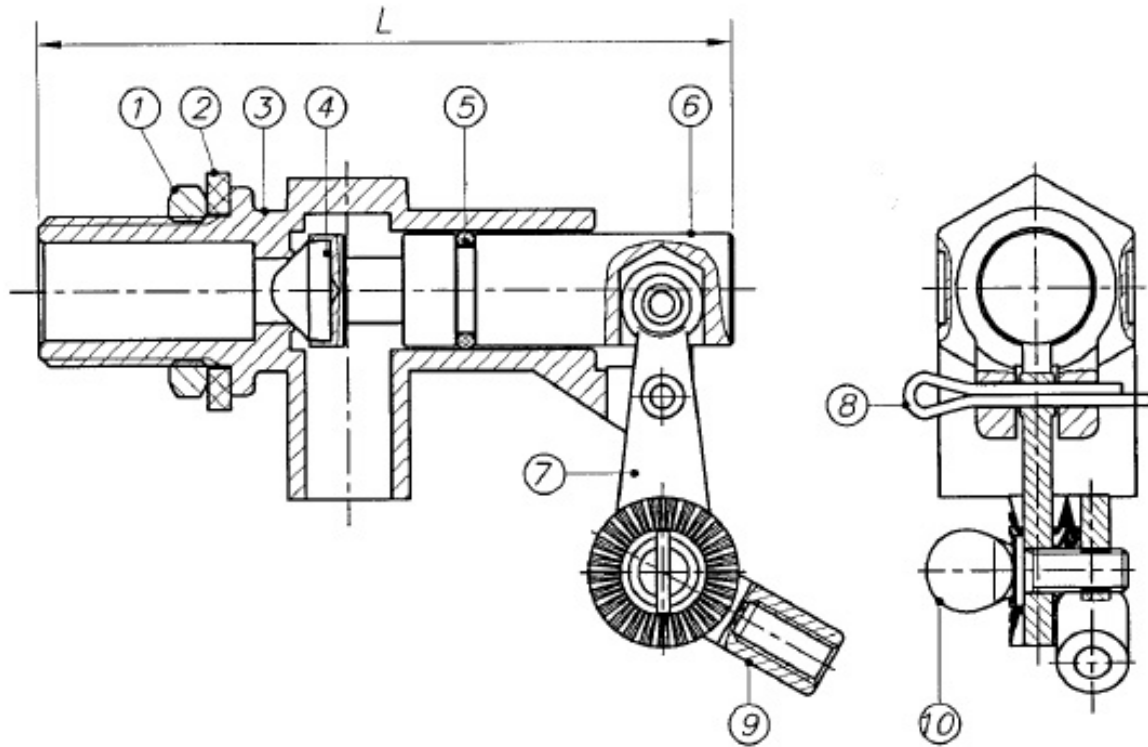




Spec Sheet: Brass Float Valve Body (BFLB)



Material Specification

No.	Parts	Materials
1	Nut	Brass C37700
2	Packing	Rubber (NBR) SN-919F
3	Body	Brass C85700
4	Seat Packing	Rubber (NBR) SN-919F
5	O Ring	Rubber (NBR) SN-919F
6	Stem	Brass C37700
7	Arm	Brass C26000
8	Spring Pin	Brass C26000
9	Handle	Brass C26000
10	Bolt	Brass C26000

Specifications

Size	L (mm)	GPM	PSI
1/2"	93	12.2	25
3/4"	101.5	14.9	25



WARNING: This product can expose you to chemicals including Lead, which are known to the State of California to cause cancer and birth defects or other reproductive harm. For more information go to: www.P65Warnings.ca.gov
Wash hands after handling.