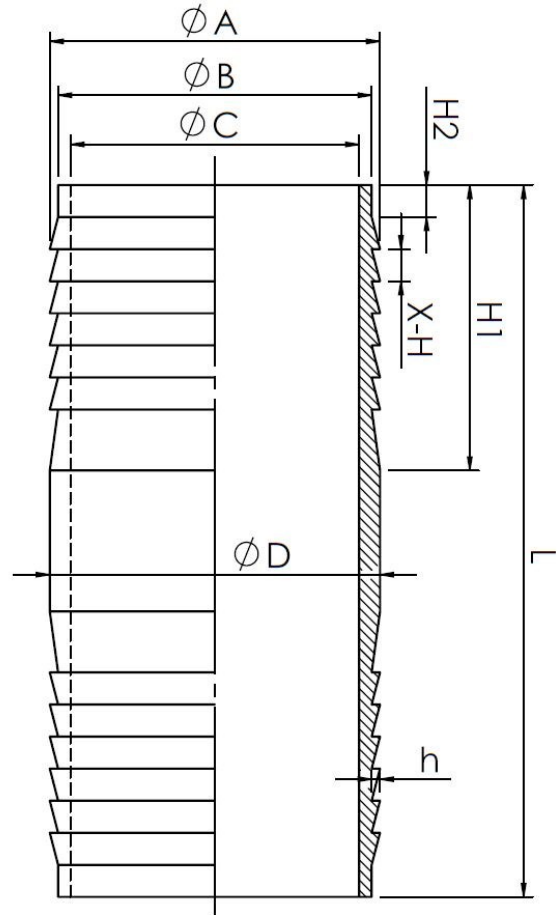


Plated Steel Barb x Barb Fitting (415 Series)

Models

- **415-050** 1/2" Plated Steel Barb x Barb Fitting
- **415-075** 3/4" Plated Steel Barb x Barb Fitting
- **415-100** 1" Plated Steel Barb x Barb Fitting
- **415-125** 1-1/2" Plated Steel Barb x Barb Fitting
- **415-150** 1-1/2" Plated Steel Barb x Barb Fitting
- **415-200** 2" Plated Steel Barb x Barb Fitting

MACHINING TOLERANCES UNLESS SPECIFIED			
DIMENSION	IT 13	DIMENSION	IT 13
< 3	±0.14	>50 ~ 80	±0.46
3 ~ 6	±0.18	>80 ~ 120	±0.54
>6 ~ 10	±0.22	>120 ~180	±0.63
>10 ~ 18	±0.27	>180~250	±0.72
> 18 ~ 30	±0.33	>250~315	±0.81
> 30 ~ 50	±0.39	>315~400	±0.89
ANGULAR		ANGULAR	



Size	A	C	D	h	H1	L
1/2"	13.50	19.50	14.00	0.75	35.00	80.00
3/4"	20.00	16.00	20.50	0.75	39.00	100.00
1"	26.00	20.50	26.00	0.80	43.00	100.00
1-1/4"	32.00	26.50	32.50	0.75	42.50	100.00
1-1/2"	39.00	33.00	39.00	0.80	44.00	101.00
2"	51.50	45.00	52.00	1.30	44.50	111.00